



valchromat

by **Investwood**

A Forest of Colour

colour your world. use your imagination.



A unique combination between the natural features of wood and the beauty of colours.
colour your world. use your imagination.



valchromat

by **Investwood**



© Constanze Tillman

Valchromat® Stand
Nicolas Laden

Valchromat®
Conceito | Concept | Concept

A Forest of Colour

Valchromat® é um painel de fibras de madeira com cor em toda a espessura, ideal para fresar e explorar a tridimensionalidade.

PT

Valchromat® is a wood fibre panel coloured throughout, ideal for machining and 3D routing.

EN

Valchromat® est un panneau de fibres de bois teinté dans la masse, idéal pour l'usinage.

FR

© Diogo Frias

Red, Violet, Yellow, Light Grey, Orange and Green Valchromat® skates
Milf Skateboard Tailors | Diogo Frias | Portugal

Valchromat®

Objetos Lúdicos | Playful Objects | Objets Ludiques



Yellow, Light Grey, Black, Grey, Blue and Violet Valchromat® game
The Grid Game | Mexico

ÚNICO | UNIQUE | UNIQUE

O seu modo único de fabrico permite atribuir-lhe características físicas e mecânicas exclusivas.

PT

Its unique method of manufacture gives it unique physical and mechanical characteristics.

EN

Sa méthode unique de fabrication permet de lui attribuer des caractéristiques physiques et mécaniques exclusives.

FR

NATURAL | NATURAL | NATUREL

O tipo de corantes utilizado e as fibras de madeira visíveis à superfície conferem-lhe uma aparência natural e não homogênea.

PT

The type of dyes used and the wood fibers visible on the surface confer it a natural and non-homogeneous appearance.

EN

Le type de colorants utilisé et les fibres de bois visible à la surface lui donnent une apparence naturelle et pas homogène.

FR

VERSÁTIL | VERSATILE | POLYVALENT

Disponível em diferentes cores, dimensões e espessuras, aceita diversos acabamentos e pode ser utilizado em inúmeras aplicações.

PT

Available in different colours, sizes and thicknesses, accepts several types of finishing and can be used in numerous applications.

EN

Il est disponible dans plusieurs couleurs, dimensions et épaisseurs, accepte divers types de finitions y peut être utilisé dans différentes applications.

FR



© MCA Estúdio

Black, Grey, Light Grey, Yellow, Orange, Violet and Blue Valchromat® furniture and shopfitting
Studio dLux | Brazil



Colorido em toda a espessura
Coloured throughout
Teinté dans la masse



Fácil de Mecanizar
Easy to Machine
Facile à Usiner



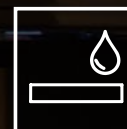
Não tóxico
Non toxic
Non toxique



Resistente a Cargas
Load Resistant
Résistant au Poids



Pouco abrasivo
Tool friendly
Peu abrasif



Hidrófugo
Moisture resistant
Hydrofuge

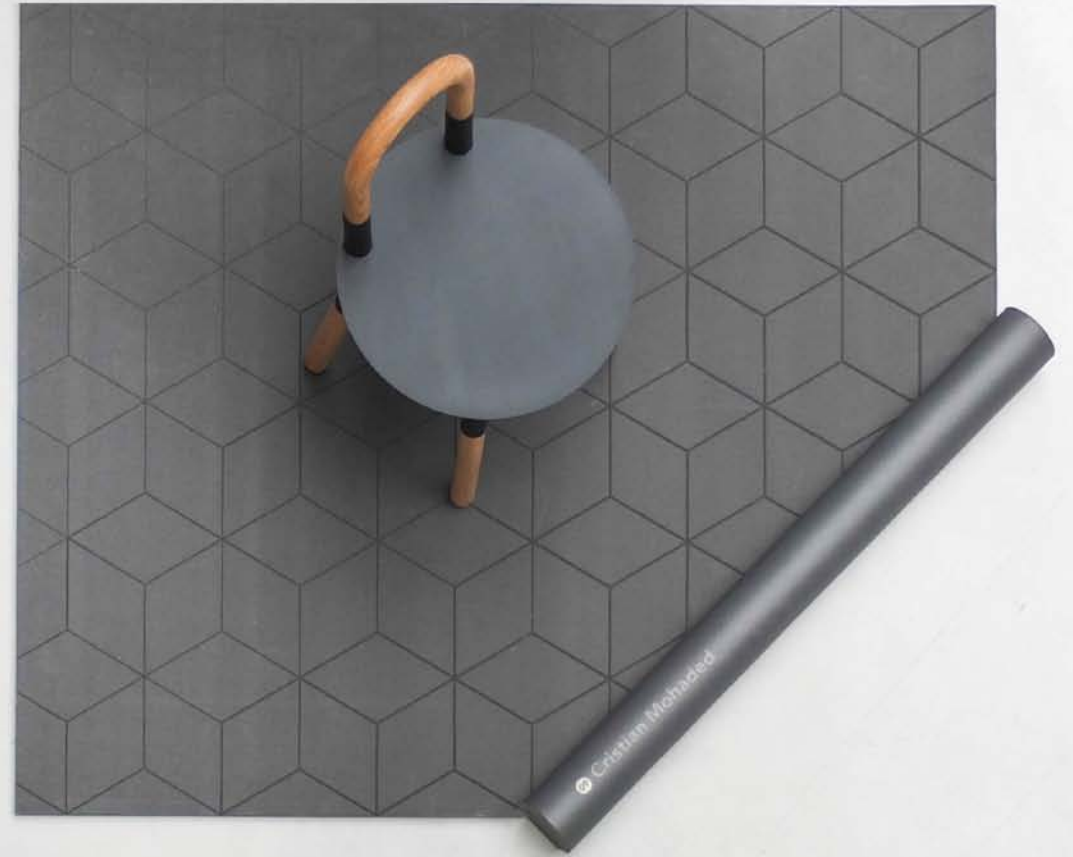
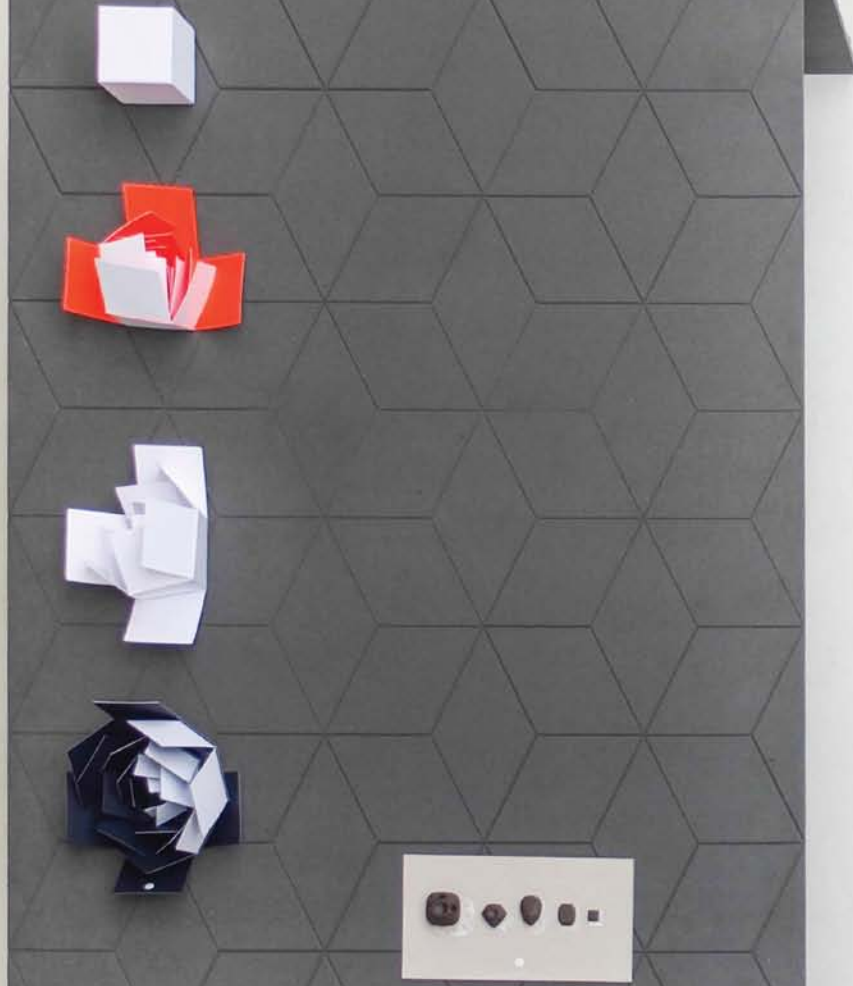
Por pedido | On request | Sur demande



Ignífugo
Fire Retardant
Ignifuge

Valchromat®

Aplicações | Applications | Applications



© Camille Baudelaire

Black Valchromat® exhibition components
Meet My Project | Bold Design and Camille Baudelaire | France

Valchromat®

Aplicações | Applications | Applications

PT
Revestimento de Paredes
Mobiliário
Painéis Decorativos
Decoração de Lojas
Painéis Acústicos
Stands
Exposições e Museus
Brinquedos
Pavimentos
Hotéis & Restaurantes
Portas
Cozinhas
Quartos de Banho

EN
Wall Cladding
Furniture
Decorative Panels
Shopfitting
Acoustic Panels
Exhibitions Stands
Exhibitions & Museums
Toys
Flooring
Hotels & Restaurants
Doors
Kitchens
Bathrooms

FR
Revêtement Murat
Meubles
Panneaux Décoratifs
Agencement
Panneaux Acoustiques
Stands
Expositions & Musées
Jouets
Parquet
Hotels & Restaurants
Portes
Cuisines
Salles de Bains

© Camille Baudelaire

Black Valchromat® exhibition components
Meet My Project | Bold Design and Camille Baudelaire | France

Valchromat®
Mobiliário | Furniture | Mobilier



© Denis Fuzii

Black, Orange, Yellow and Chocolate Brown Valchromat® chair
Kuka Chais | Denis Fuzii | Brazil

Valchromat®
Mobiliário | Furniture | Mobilier



Black and Blue Valchromat® chair
Portuguese Chair | Francisco Fanucci | Brazil

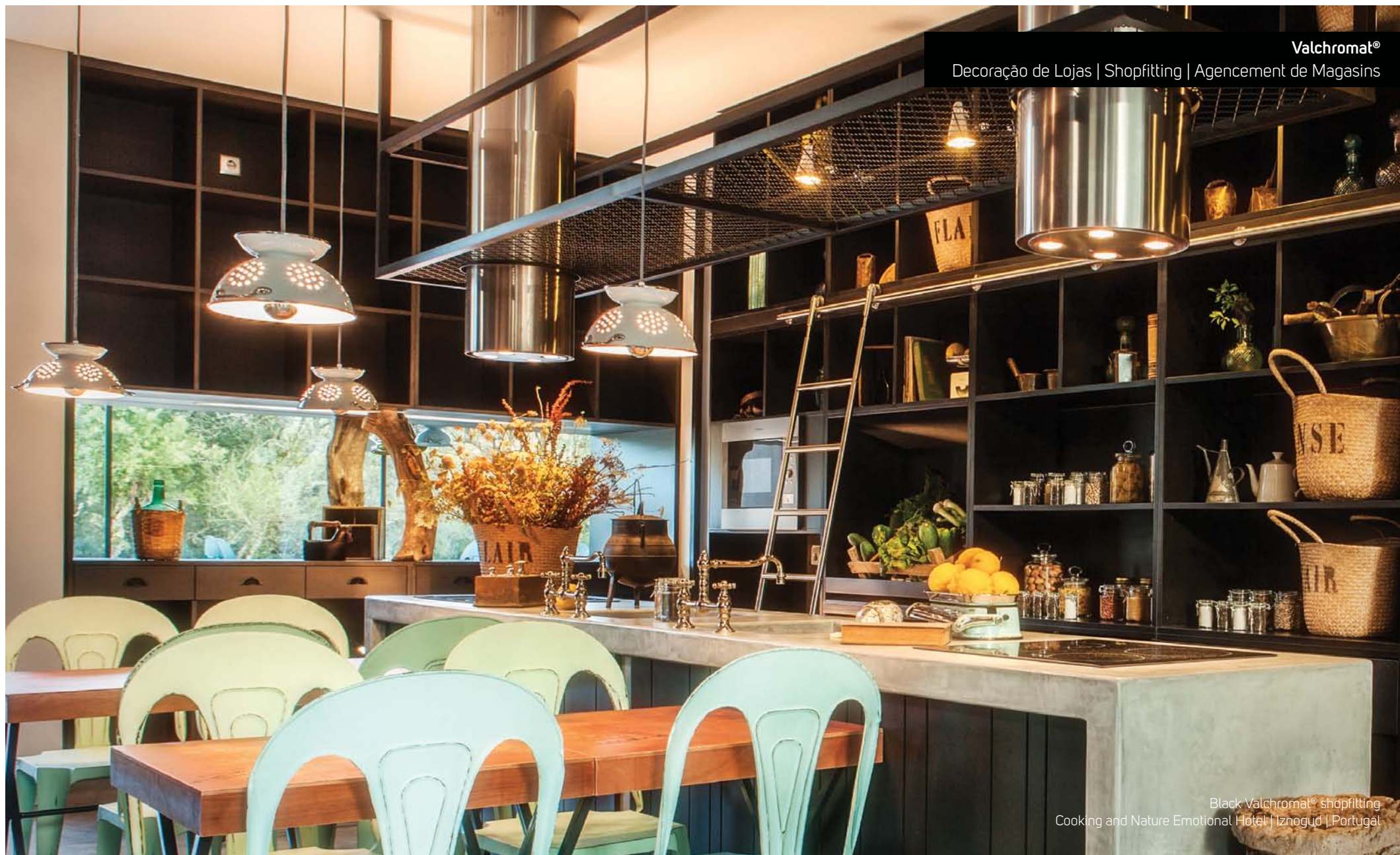
Valchromat®
Mobiliário | Furniture | Mobilier



Black Valchromat® furniture and lighting
Dami Collection | Seung Yong Song | South Korea

Valchromat®

Decoração de Lojas | Shopfitting | Agencement de Magasins



Black Valchromat® shopfitting
Cooking and Nature Emotional Hotel | Iznogud | Portugal

Valchromat®

Objetos Lúdicos | Playful Objects | Objets Ludiques



Black, Grey and Violet Valchromat® spinning top
Cuco Toys | Mariana Costa e Silva | Portugal



Black and Red Valchromat® cradle and rocking horse
Gommini | Germany

Valchromat®
Cozinhas | Kitchens | Cuisines



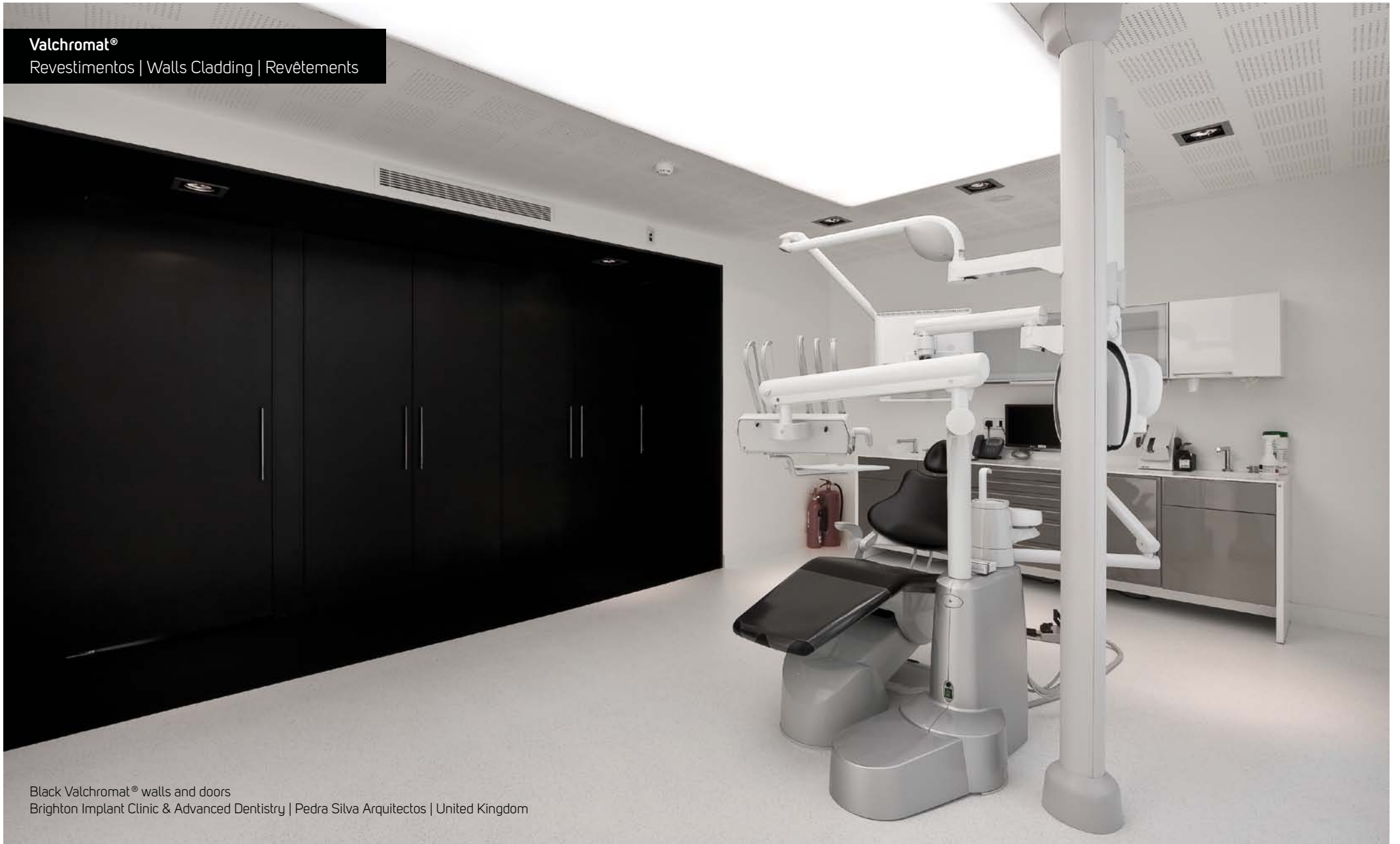
Light Grey Valchromat® wall cladding and cupboards
Sifferlin | France

Valchromat®
Cozinhas | Kitchens | Cuisines



Light Grey Valchromat® wall cladding and cupboards
Siffertin | France

Valchromat®
Revestimentos | Walls Cladding | Revêtements

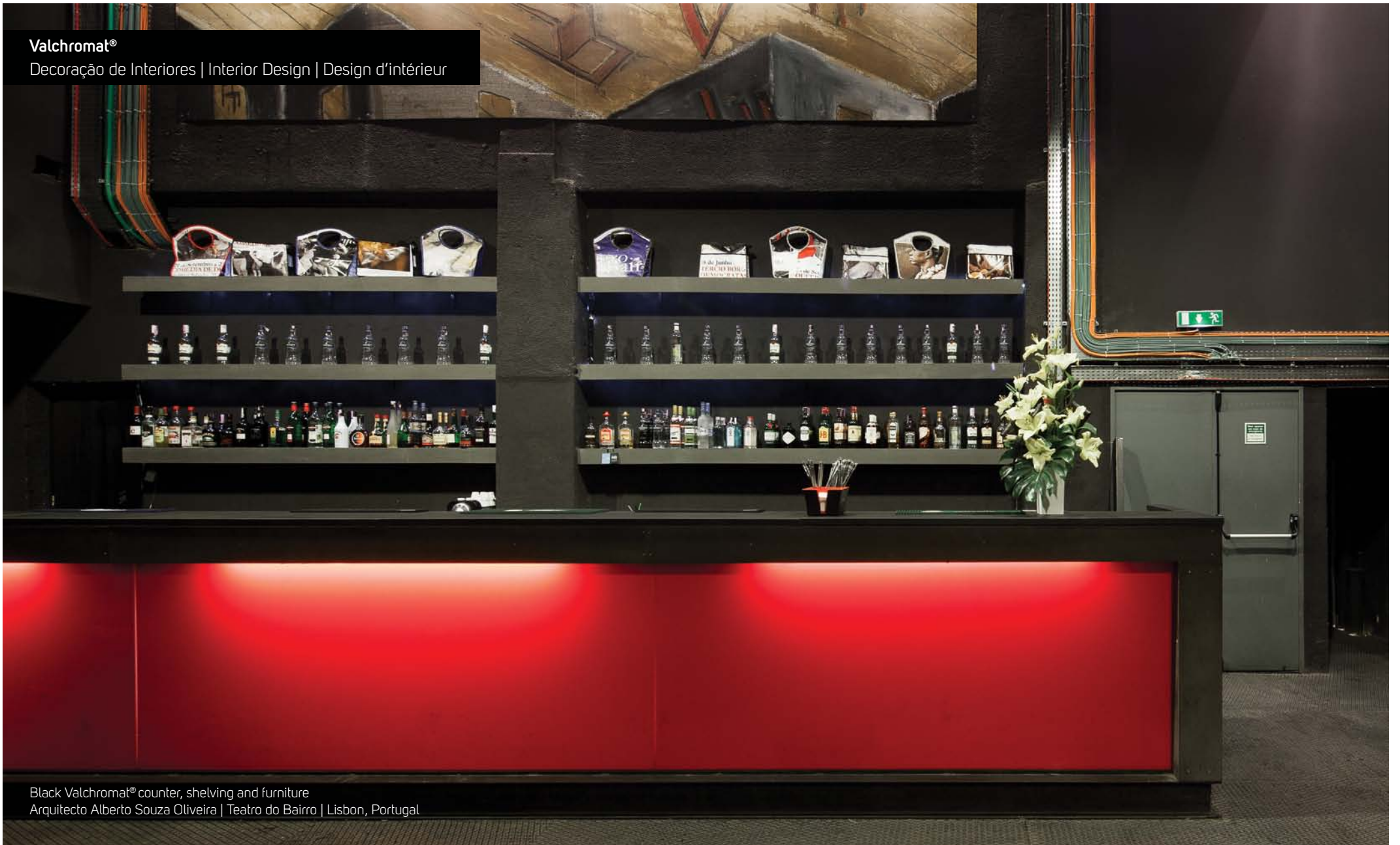


Black Valchromat® walls and doors
Brighton Implant Clinic & Advanced Dentistry | Pedra Silva Arquitectos | United Kingdom



Valchromat®

Decoração de Interiores | Interior Design | Design d'intérieur



Black Valchromat® counter, shelving and furniture
Arquitecto Alberto Souza Oliveira | Teatro do Bairro | Lisbon, Portugal

VIKUS'S

Cafè&Restaurant



Valchromat®
Stands | Exhibition Stands | Stands



Red Valchromat® stand
Swissartis Stand | François Coussement, Swissartis | Morocco

Valchromat®
Stands | Exhibition Stands | Stands

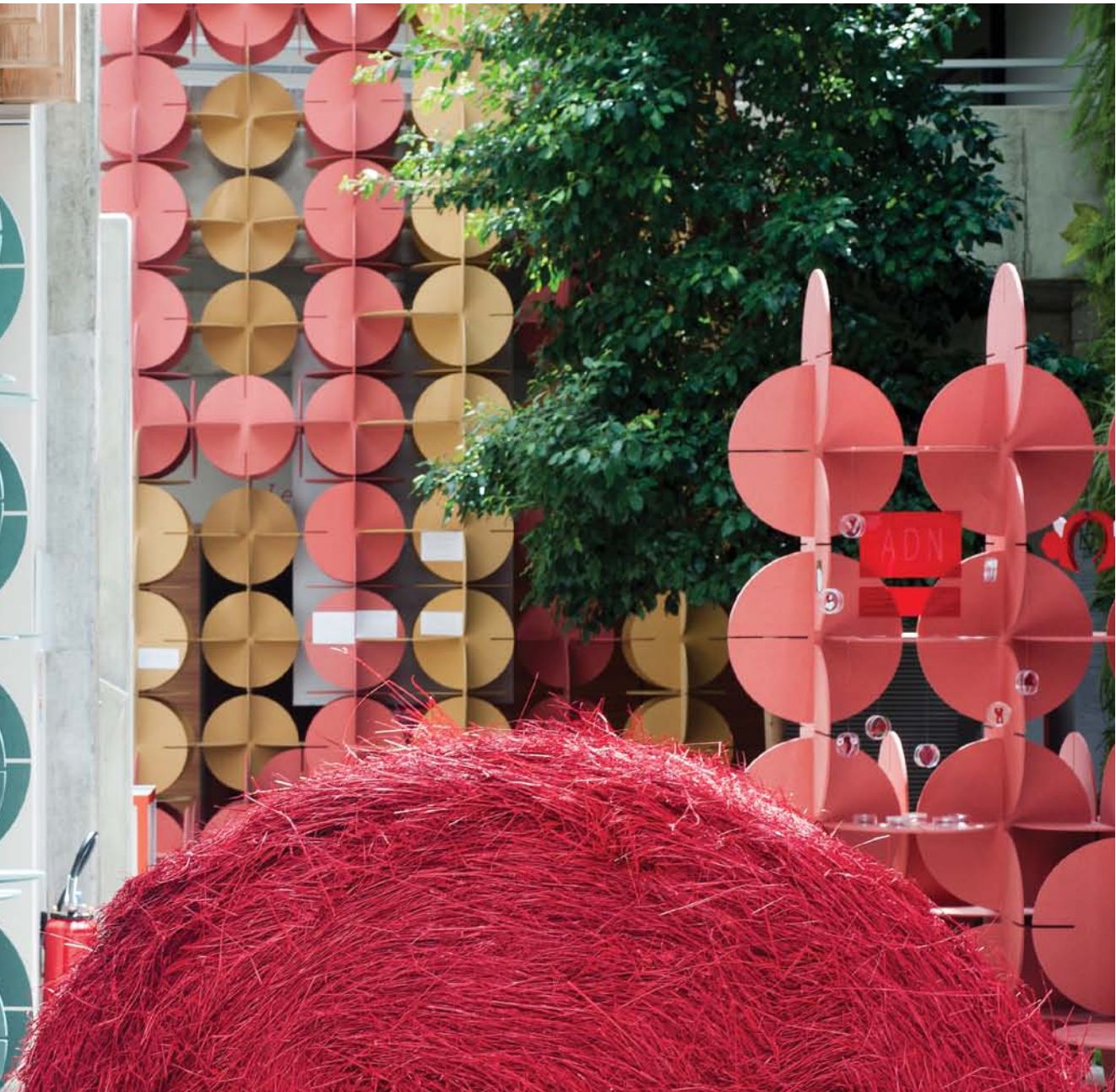


© Joel Knight

Valchromat® stand
Unik Design & Mollibois and Studio 47

Valchromat®
Exposições | Exhibitions | Expositions

Green, Yellow and Red Valchromat® exhibition displays
"La Vache qui Rit" 90 years exhibition | STIA | Plano Geométrico | France



Valchromat®

Exposições | Exhibitions | Expositions

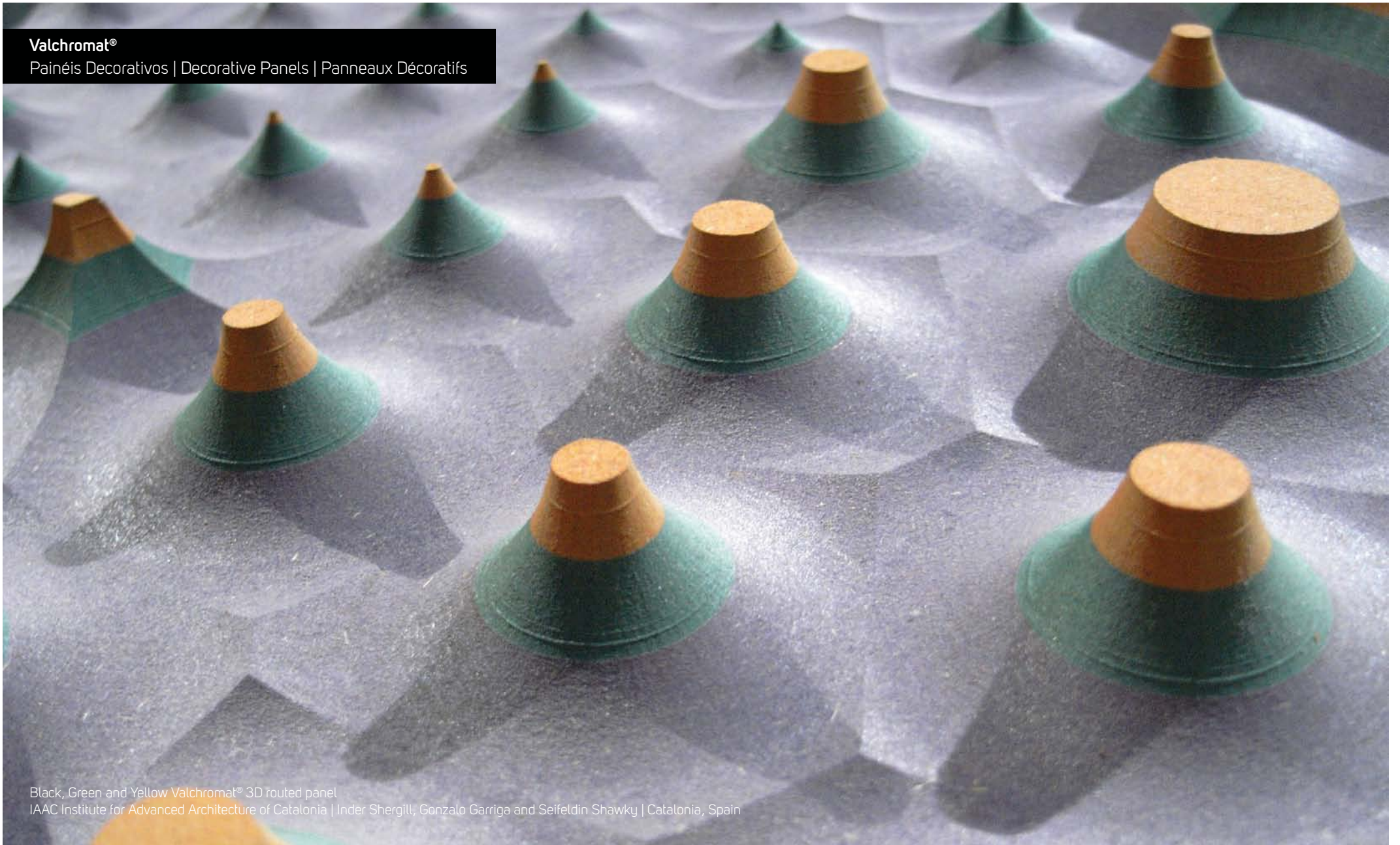
ESPAÇO

CASA
VOGUE

Black Valchromat® exhibition displays
Espaço Casa Vogue | Mostra Black | AR Arquitetos | Brazil

Valchromat®

Painéis Decorativos | Decorative Panels | Panneaux Décoratifs



Black, Green and Yellow Valchromat® 3D routed panel
IAAC Institute for Advanced Architecture of Catalonia | Inder Shergill, Gonzalo Garriga and Seifeldin Shawky | Catalonia, Spain

Valchromat®
Revestimentos | Walls Cladding | Revêtements



Violet Valchromat® decorative panel
Concreta Collection | Oca Brasil | Brazil

Valchromat®
Mobiliário | Furniture | Mobilier



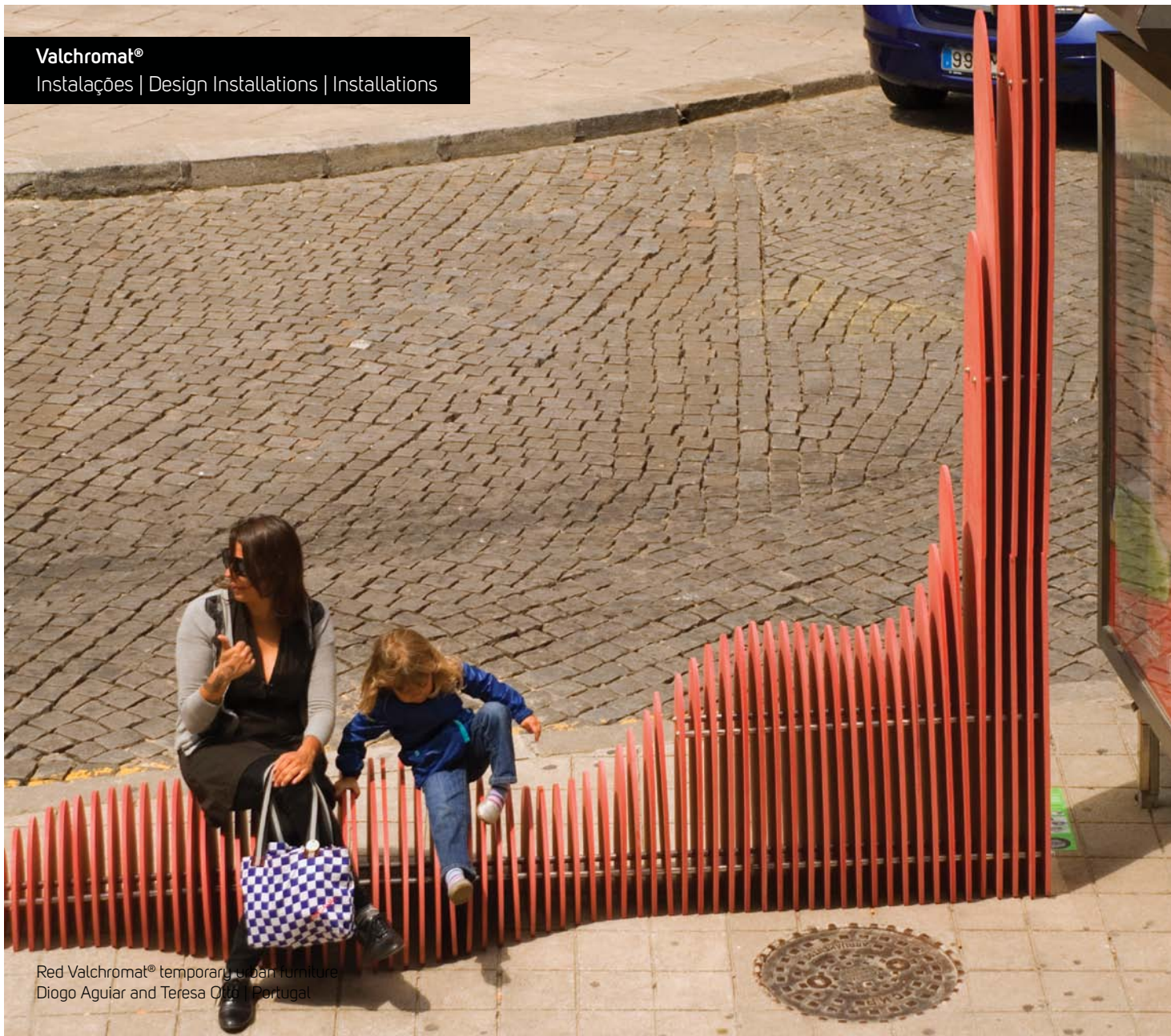
Black Valchromat® furniture
Sofia Passarinho Home | Portugal

Valchromat®
Mobiliário | Furniture | Mobilier

Black, Yellow, Grey, Light Grey, Blue and Violet Valchromat® shelving
Imeuble | Bjorn Jorund Blikstad | By Corporation | Norway

Valchromat®

Instalações | Design Installations | Installations



Red Valchromat® temporary urban furniture
Diogo Aguiar and Teresa Oita | Portugal



valchromat

by Investwood

Cores | Colours | Couleurs

Cinza Claro | Light Grey | Gris Clair
SLG

Cinza | Grey | Gris
SCZ

Preto | Black | Noir
SBL

Chocolate | Chocolate | Chocolat
SCB

Vermelho | Red | Rouge
SSC

Amarelo | Yellow | Jaune
SYW

Laranja | Orange | Orange
SOR

Violeta | Violet | Violet
SVI

Azul | Blue | Bleu
SRB

Verde Menta | Green Mint | Vert Menthe
SGM

Valchromat® Fire Retardant also available.
FSC® & PEFC Por pedido | On request | Sur demande

Espessura Nominal | Nominal Thickness | Épaisseur Nominale

Características | Feature | Caractéristiques

Un **8** **12** **16** **19** **30** **Norma Standard Norme**

Densidade (±30) | Density (±30) | Densité (±30) Kg/m 850 820 800 790 740 EN 323

Inchamento (24 h) | Swelling (24h) | Gonflement (24h) % 12 10 8 8 7 EN 317

Resistência à Tracção | Internal Bond | Résistance à la Traction N/mm² 0.80 0.80 0.75 0.75 0.75 EN 319

Resistência à Flexão | Bending Strenght | Résistance à la Flexion N/mm² 42 40 38 38 36 EN 310

Módulo de Elasticidade em Flexão | Modulus of Elasticity | Module D'élasticité en Flexion N/mm² 3400 3200 3100 3100 3000 EN 310

Inchamento após Ensaio Cíclico | Swelling After Cyclic Test | Gonflement en Épaisseur Après Essai Cyclique % 19 16 15 15 15 EN 321

Resistência à Tracção após Ensaio Cíclico | Internal Bond After Cyclic Test | Résistance à la Traction Après Essai Cyclique N/mm² 0.30 0.25 0.20 0.20 0.15 EN 321

Teor de Formaldeído | Level of Formaldehyde | Concentration de Formaldéhyde mg/100g ≤ 8 [Class(e) E1] EN 120

Reacção ao Fogo | Fire Reaction | Réaction au Feu F ≥12 a ≤30 [Class(e) D-s2, d0] EN 13501

Tolerância de Espessura | Thickness Tolerance | Tolérance d'Épaisseur mm ±0,2 ±0,3

Tolerância de Dimensão | Dimension Tolerance | Tolérance de Dimension mm/m ±2; max. ±5

Ensaio Cíclico Teste Hidrófugo Norma (EN 321) | Cyclic Tests, Hydrophobic Test Standard (EN 321) | Essais Cícliques, Test Hydrofuge Norme (EN 321) **Temperatura | Temperature | Temperature (°C)** **Duração | Lenght | Durée (Horas | Hours | Heurs)**

Na Água | In the Water | Dans l'Eau 20 ± 1 70 ± 1

No Congelador | In the Freezer | Dans le Congélateur -12 a | to | au -25 24 ± 1

Na Estufa | In the Oven | Dans l'Étuve 70 ± 2 70 ± 1

Todas as cores disponíveis em:
All colours available in:
Toutes les couleurs disponibles en:

Espessuras
Thicknesses
Épaisseurs
(mm)

Dimensões
Dimensions
Dimensions
(mm)

8

2440x1220

12

2440x1830

16

3660x1220

19

3660x2440

30





valchromat.pt | facebook.com/Valchromat
valchromat@investwood.pt

